

AUTONOMOUS INFRASTRUCTURE INTELLIGENCE

How Our Autonomous Infrastructure AI Eliminates Manual Field Audits and Protects Remote Sites in Real Time

THE CHALLENGE

BLIND SPOTS ACROSS REMOTE SUBSTATIONS CREATE DANGEROUS SAFETY RISKS AND COSTLY ASSET FAILURES

Managing distributed energy infrastructure creates massive visibility gaps across thousands of square miles. Our client's operations team relied entirely on manual, paper-based field audits and reactive public reports to monitor asset health, emergency events, and worker safety compliance — an approach built for a different era of infrastructure scale.

Safety supervisors had to physically drive between active distribution yards and substations to verify crew clearances from high-voltage equipment and PPE compliance. Field data took days to be manually transcribed into central databases, meaning critical safety violations, structural failures, and environmental hazards went completely unnoticed until a localized breakdown or onsite injury occurred.

Standard security software failed completely. Generic motion-sensing cameras could not differentiate between normal site movement and an active thermal anomaly or a worker crossing a critical arcing boundary. The organization needed an entirely new intelligence layer — one that could watch every site, all the time, with algorithmic precision and real-time judgment.

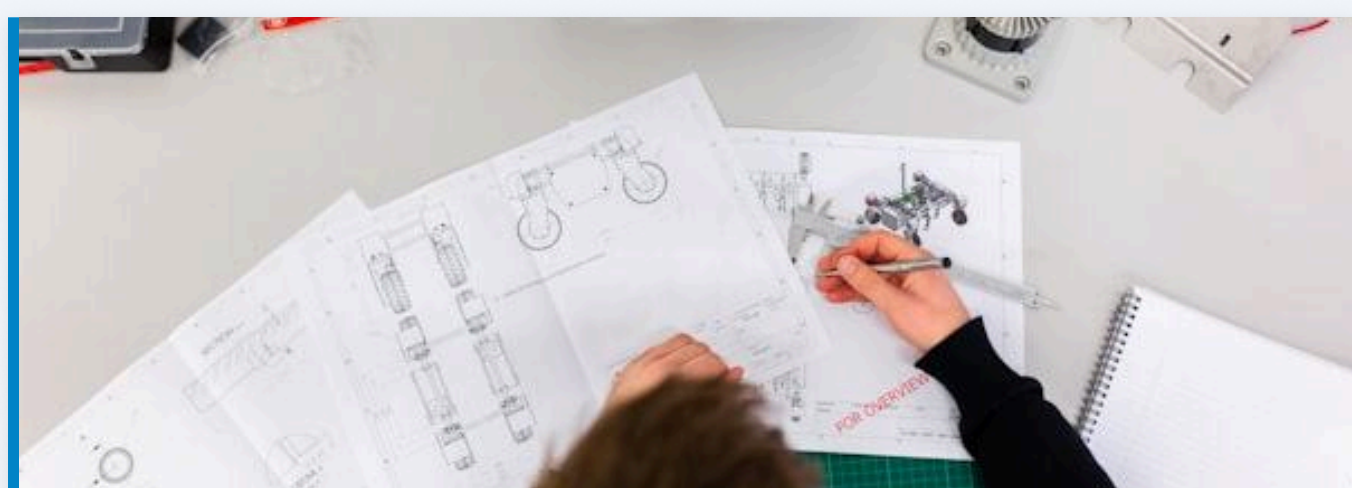


0 REAL-TIME SITE VISIBILITY

MULTIPLE DAYS FIELD DATA LAG BEFORE DEPLOYMENT

THE SOLUTION: AN AUTONOMOUS MONITORING BOT THAT WATCHES EVERY SITE 24/7 AND ACTS BEFORE ACCIDENTS HAPPEN

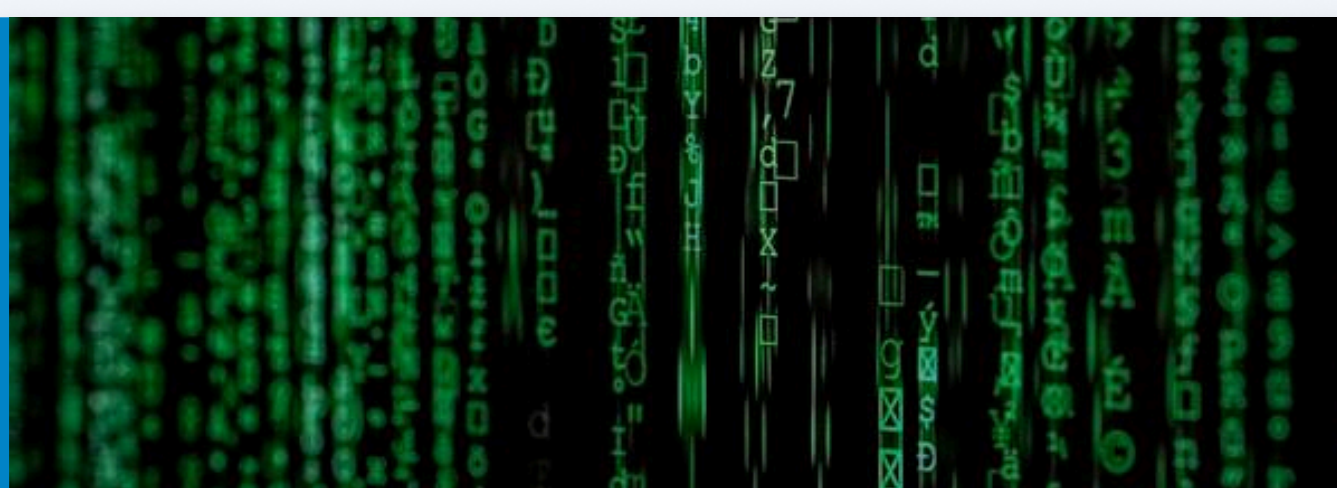
Our autonomous Infrastructure Intelligence platform eliminated every manual audit cycle entirely, replacing paper-based patrol operations with a three-layer intelligent sensing and response pipeline that delivers continuous, real-time spatial command over every distributed energy asset — deployed within a single operational window and designed to scale without constraint across any infrastructure footprint.



01

GEOSPATIAL RISK MAPPING

Centimeter-accurate digital geofences established around critical hazards like transformer bays and high-voltage line vectors. Every active exclusion zone is continuously monitored in real time, with precise worker position tracked against dynamic boundary conditions across the full site footprint. When proximity thresholds are breached, automated intervention protocols fire before human reaction is even possible.



02

MULTI-VECTOR COMPUTER VISION

Live video streams from substation cameras, tower-mounted optics, and mobile field units are analyzed frame-by-frame by a multi-class computer vision model. The system simultaneously verifies PPE compliance including hardhats and high-vis vests, tracks worker trajectories relative to all active exclusion boundaries, and scans for environmental anomalies including localized smoke signatures, thermal irregularities, and structural deformation indicators.



03

REAL-TIME AGENTIC ALERTING

Manual reporting chains are bypassed entirely. The moment any compliance breach, geofence violation, or environmental hazard is detected, instantaneous notifications are pushed simultaneously to onsite warning systems, supervisor mobile devices, and central control dashboards. Response time compresses from hours or days of manual audit cycles to milliseconds of automated detection — a fundamental transformation in how field risk is managed at scale.

THE BUSINESS IMPACT

\$480K+
LIABILITY SAVINGS

1,400%
PIPELINE ROI (14X)

92.6%
DETECTION PRECISION

ZERO
MANUAL SITE PATROLS

REAL-TIME
INCIDENT DETECTION

"The infrastructure intelligence pipeline gave us a level of ground truth we could immediately take into the boardroom. We now have absolute spatial clarity over worker safety, structural emergencies, and asset compliance in real time — before an incident can even occur."

— DIRECTOR OF GRID SAFETY & OPERATIONS